


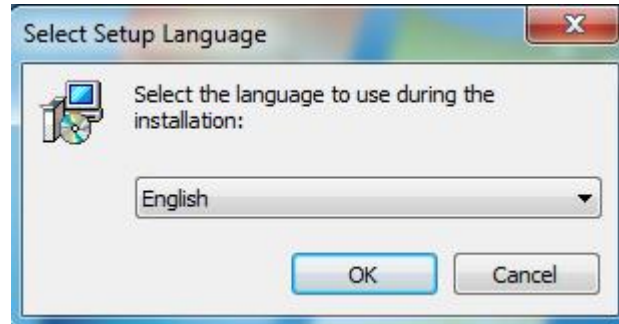
Label Printer

Driver Setup Manual

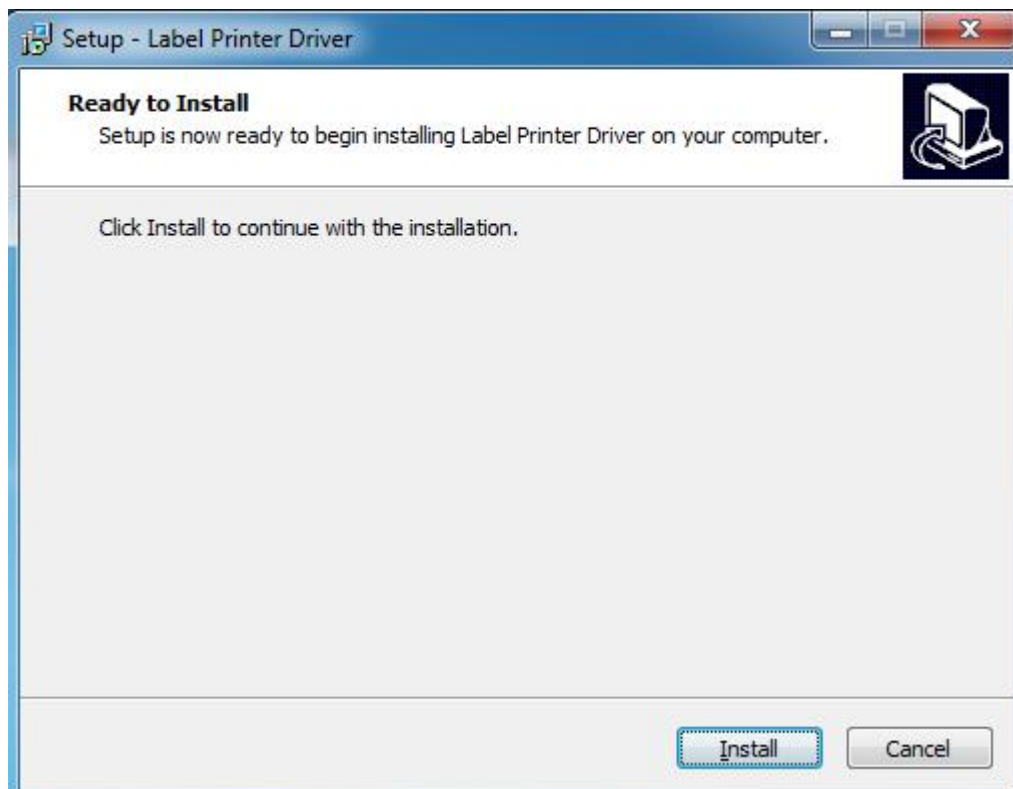
1. Windows Driver Installation

Before installing the printer driver, please connect your printer to the computer and make sure the power switch is turned on.

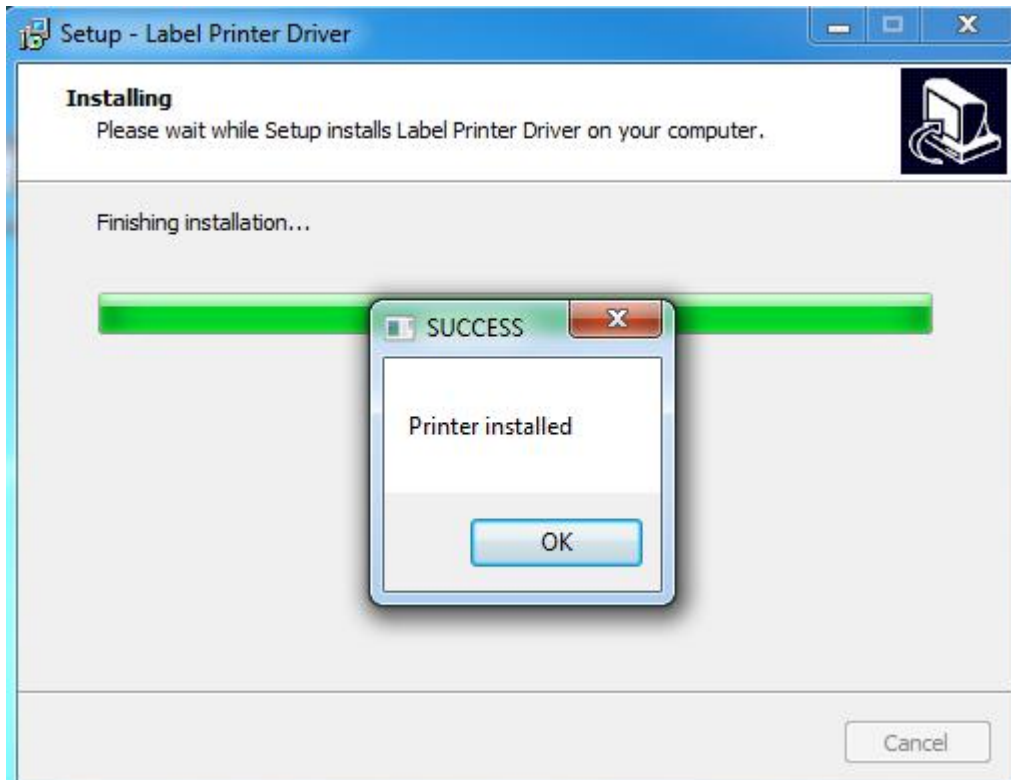
Double click the installation  LabelPrinterDriverInstall , Then, it will show as below picture:



Select the language, then click “OK” .Then, it will show as below picture:



Then click "Install". It will show as below picture:



Wait till it shows the above picture, it means, the printer driver has been installed successfully, and then click "OK".



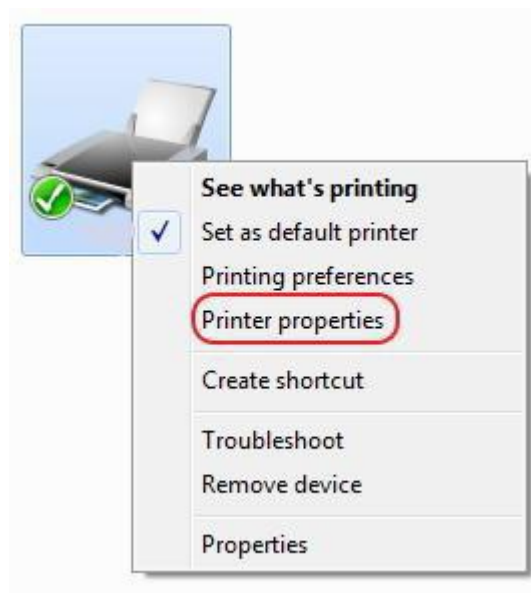
Click "Finish" to finish driver installation.

2. Printer Setup and Testing

2.1 Setup Printer Properties

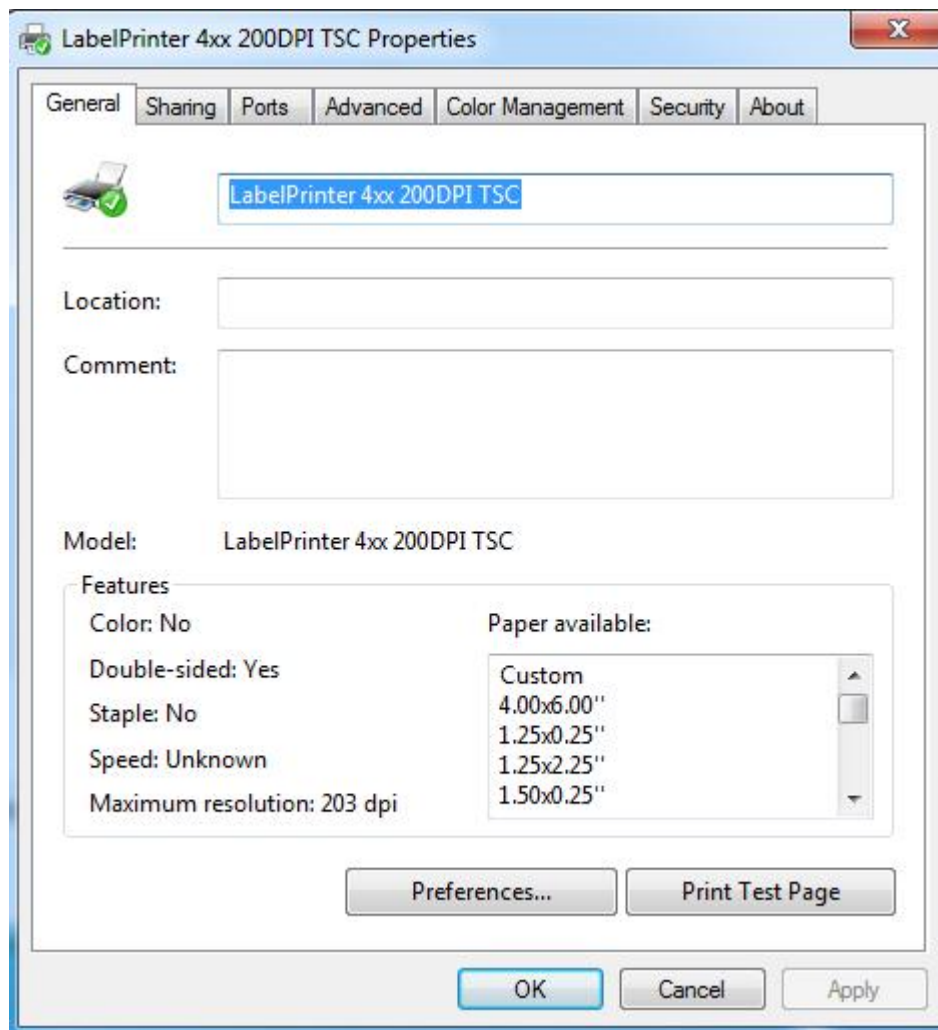


Click Start Menu, and then click " Devices and Printers", just as above picture



Right-Click "Label Printer" and then click "Printer properties"

And then, it will show as below picture:

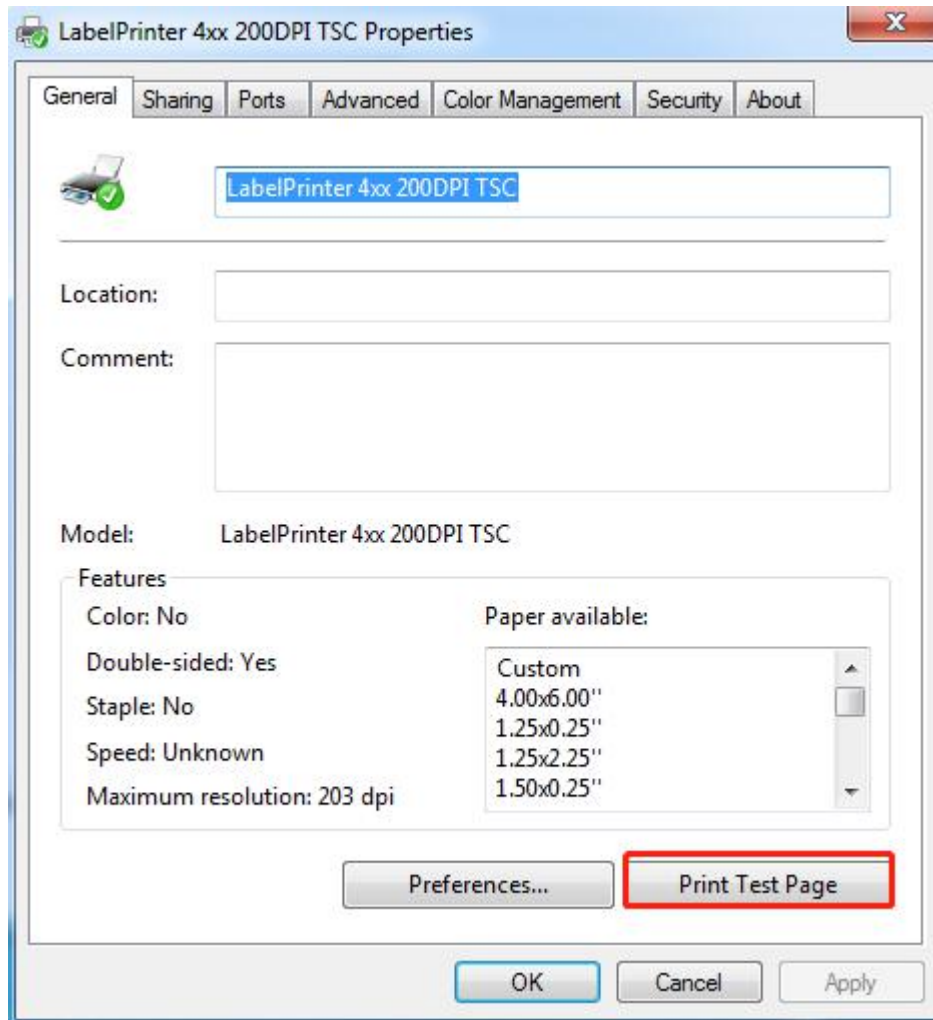


On Label Printer “General”, you could configure the printer communication port, such as Serial port, Parallel port and USB port. You also could set the paper specification, beeper etc.

After all the setting, you could start to print the testing page.

2.2 Printing Test Page

After finishing port configuration, we start to print test page. On Label Printer “General”:

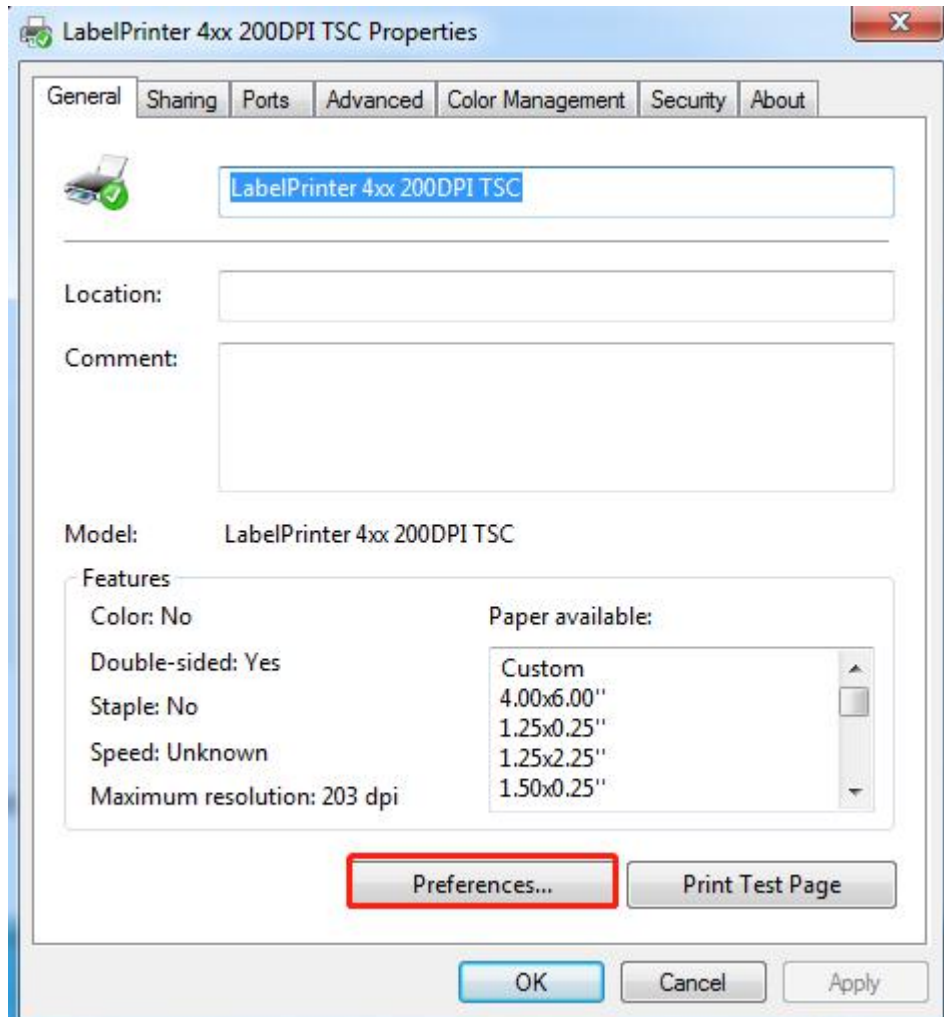


Click “Print Test Page”, the printer will print test page, which means the printer has been connected with computer successfully and the port configuration is correct.

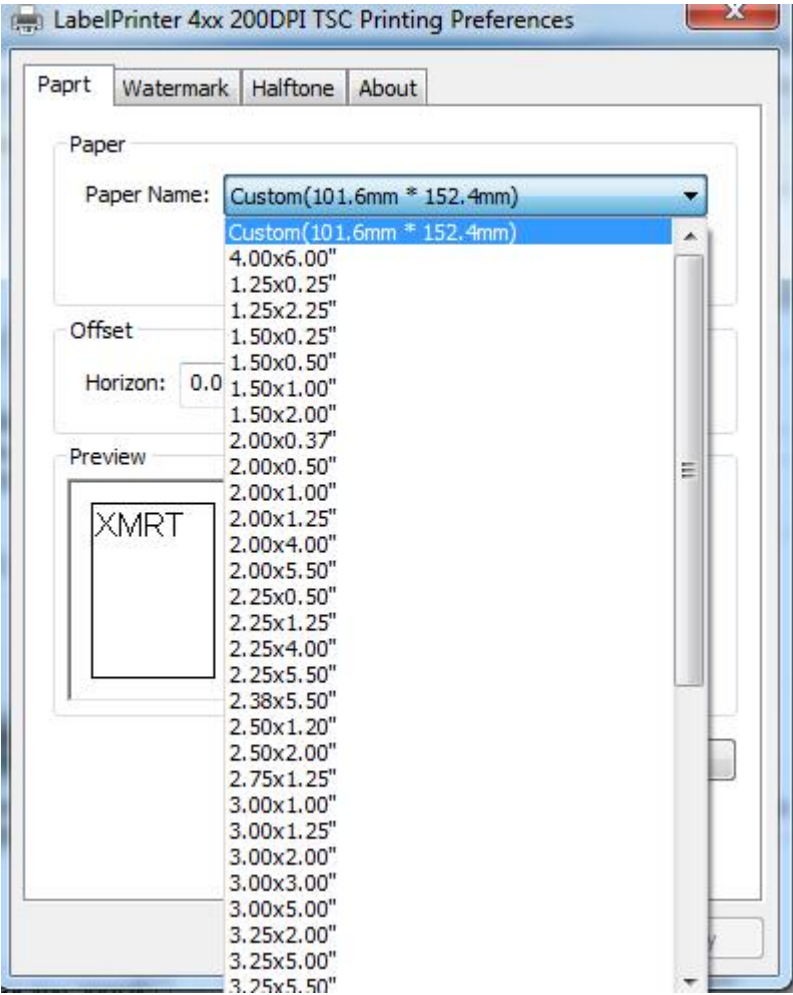
2.3 Other Properties and Function Configuration

You could set the paper specification etc., please refer to the follows:

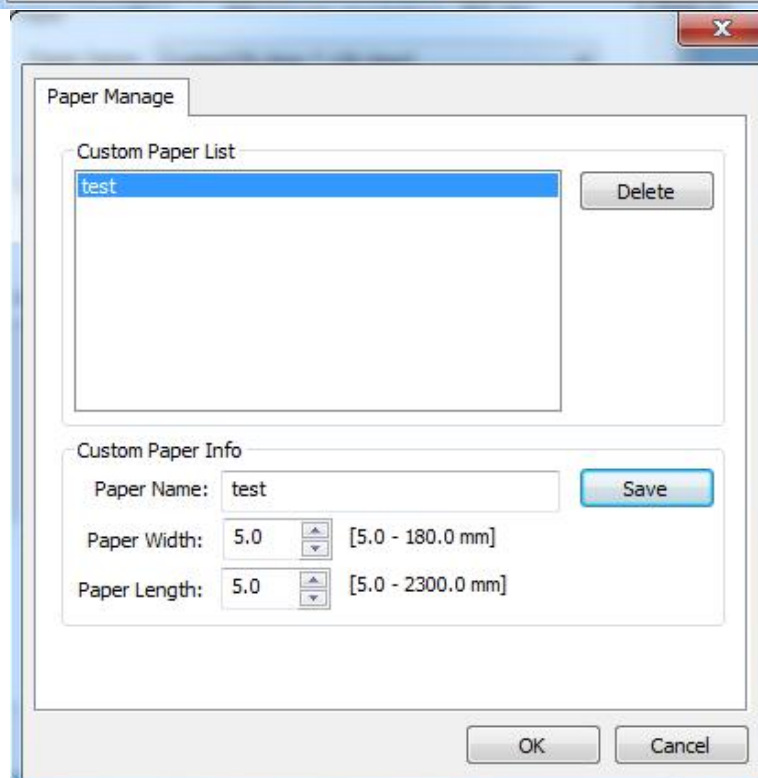
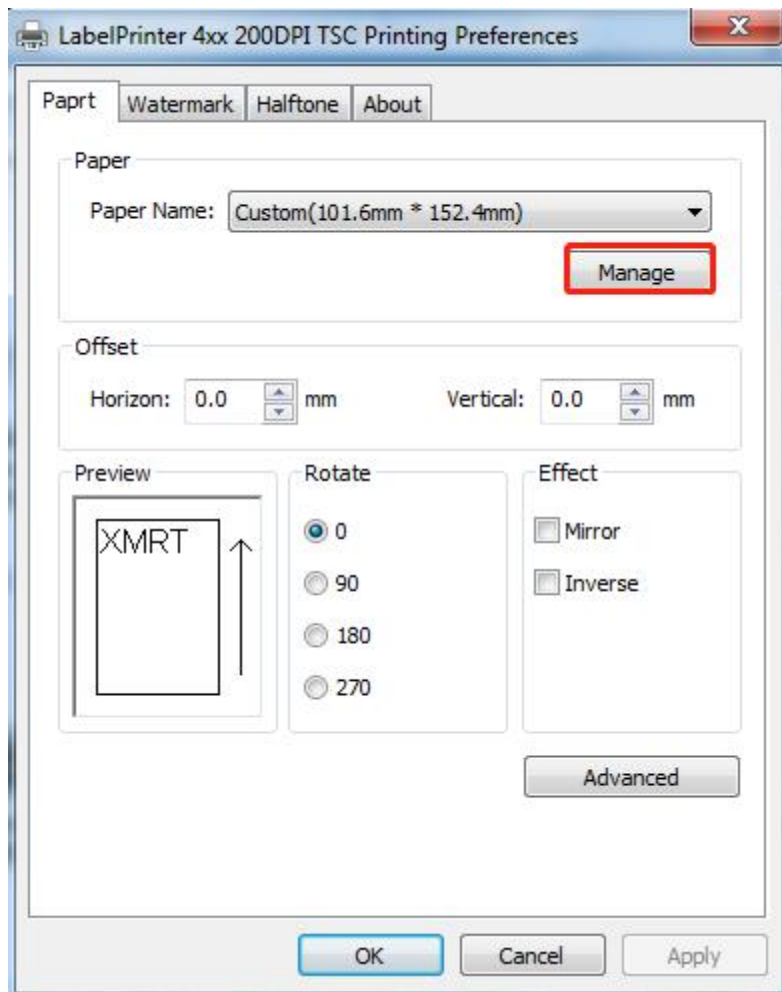
Select the printer properties, click on "Print preferred page", enter the page and print settings interface, as shown in the following figure.



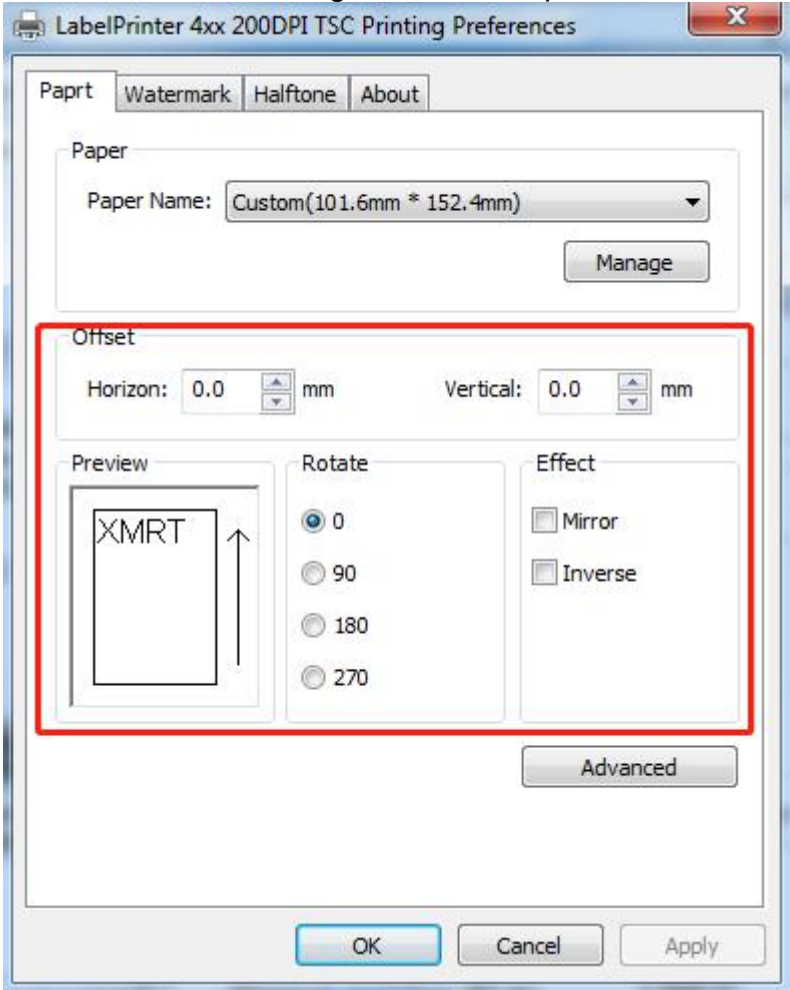
Click the Paper Name drop-down box to select the paper size to use.



Click "Manage" to enter the custom paper interface.



Offset sets horizontal and vertical margins. Rotate to print in different directions.



Click Advanced Settings to enter the Set Print Density and Set Print Speed screen as shown in the following figure.

